

Phase 1

Phase 1

 NO VEHICLES IN THIS AREA

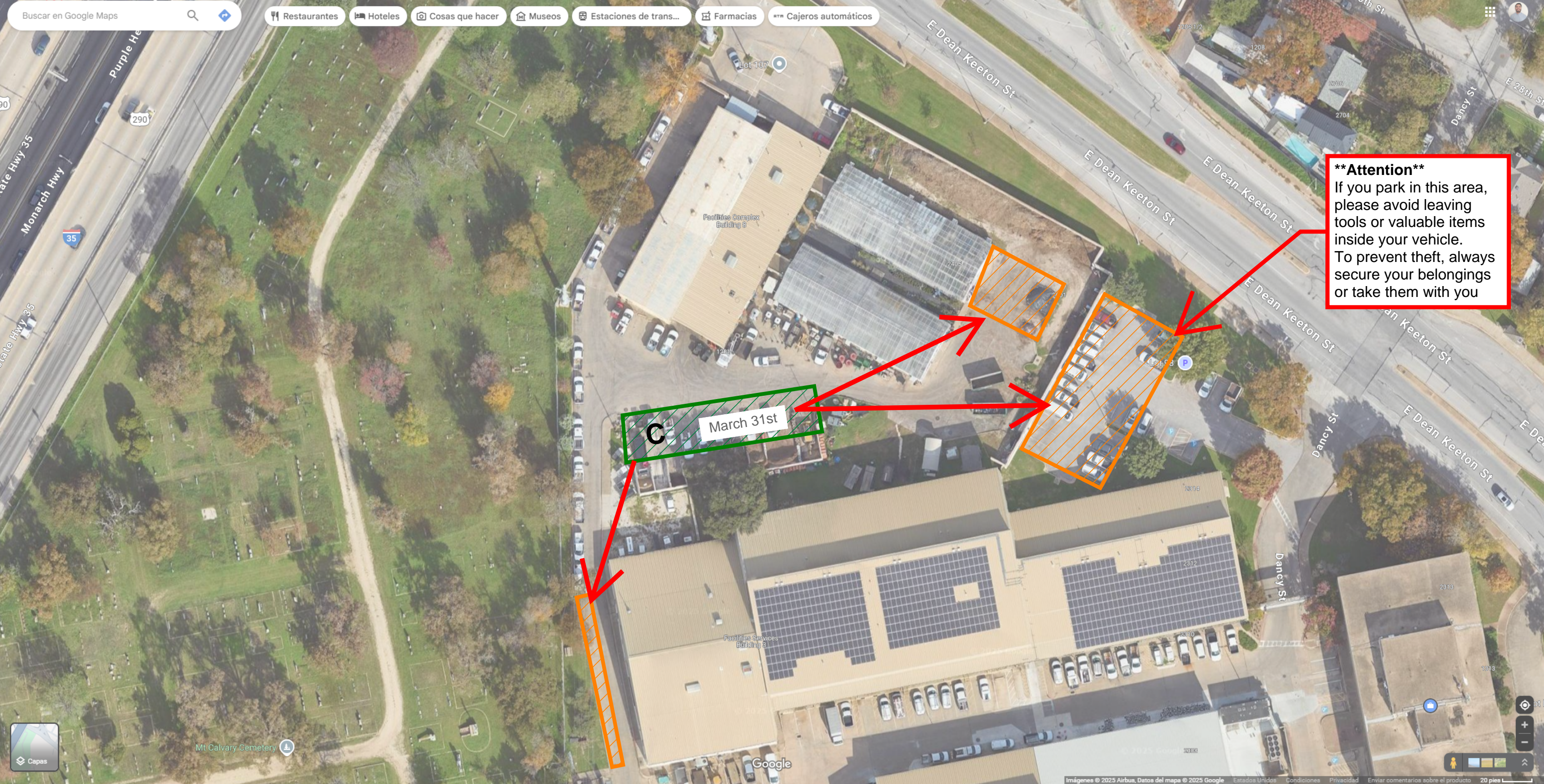
 TEMPORARY VEHICLES LOCATION

A) Shed Relocation and Gravel Surfacing

B) Concrete Parking Stops Relocation



The University of Texas at Austin
Campus Operations



****Attention****
If you park in this area, please avoid leaving tools or valuable items inside your vehicle. To prevent theft, always secure your belongings or take them with you

C March 31st

 NO VEHICLES IN THIS AREA

 TEMPORARY VEHICLES LOCATION

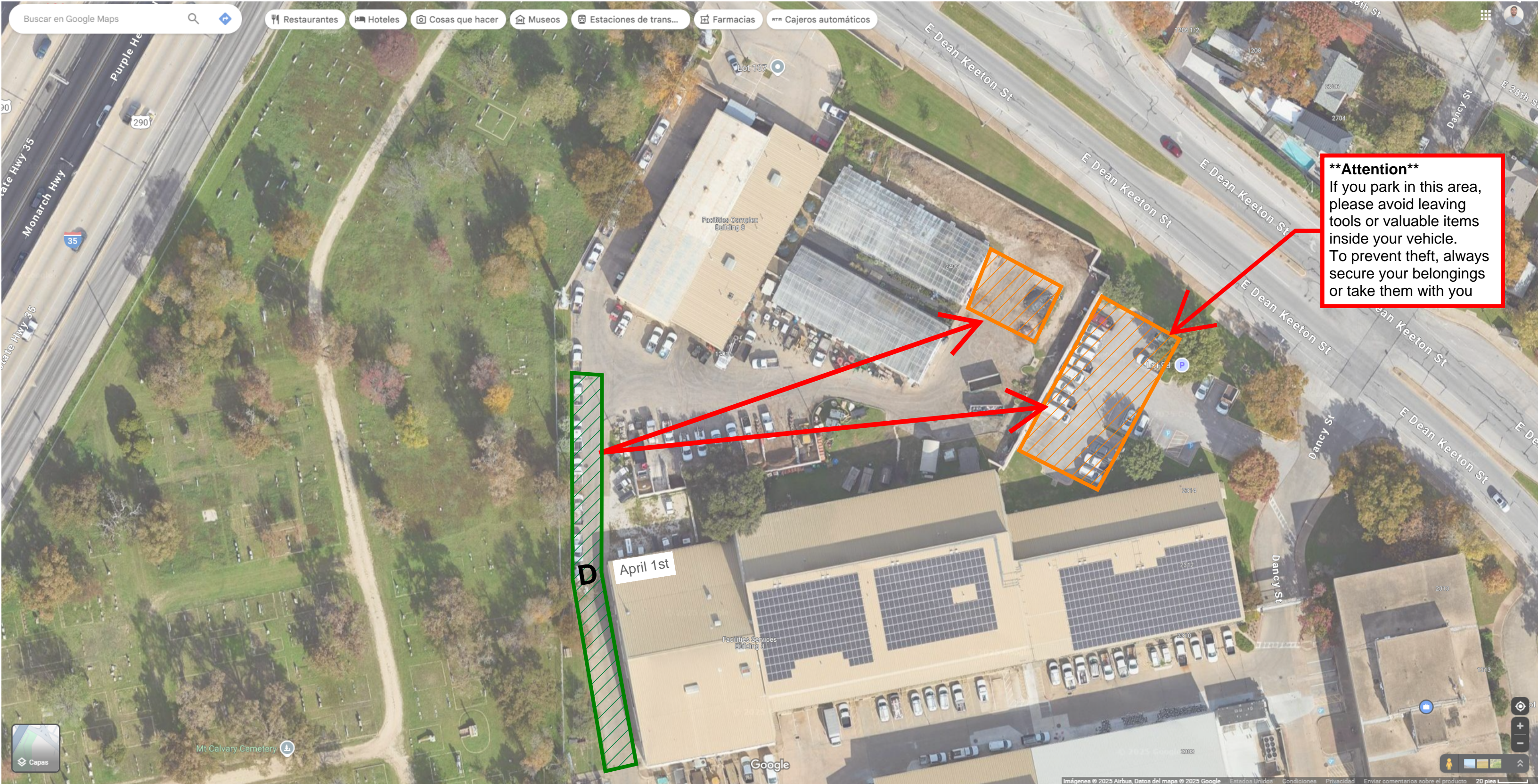
C) Striping

Phase 1

Phase 2



The University of Texas at Austin
Campus Operations



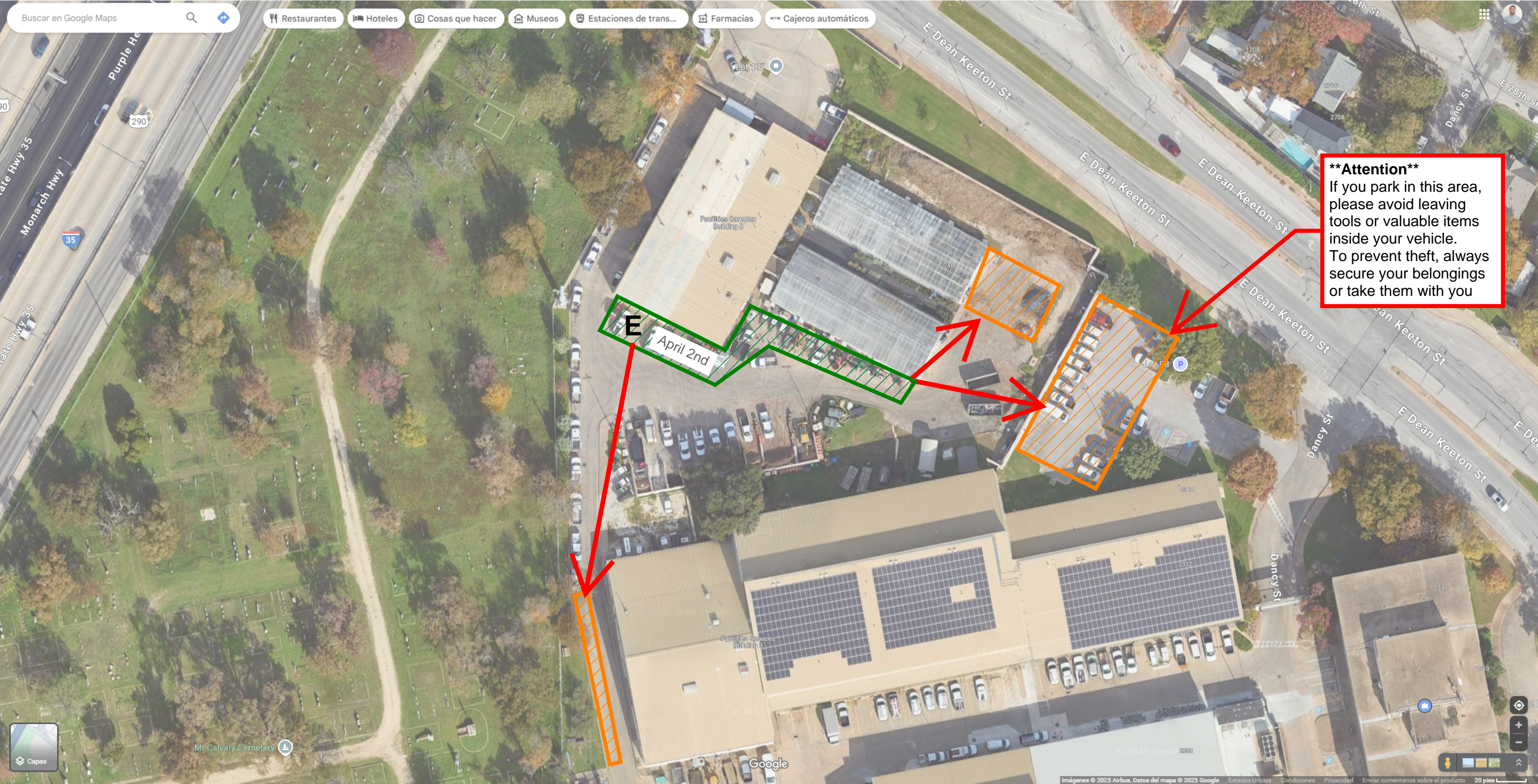
****Attention****
If you park in this area, please avoid leaving tools or valuable items inside your vehicle. To prevent theft, always secure your belongings or take them with you

Phase 1

Phase 3

-  NO VEHICLES IN THIS AREA
-  TEMPORARY VEHICLES LOCATION

C) Striping



****Attention****
If you park in this area, please avoid leaving tools or valuable items inside your vehicle. To prevent theft, always secure your belongings or take them with you

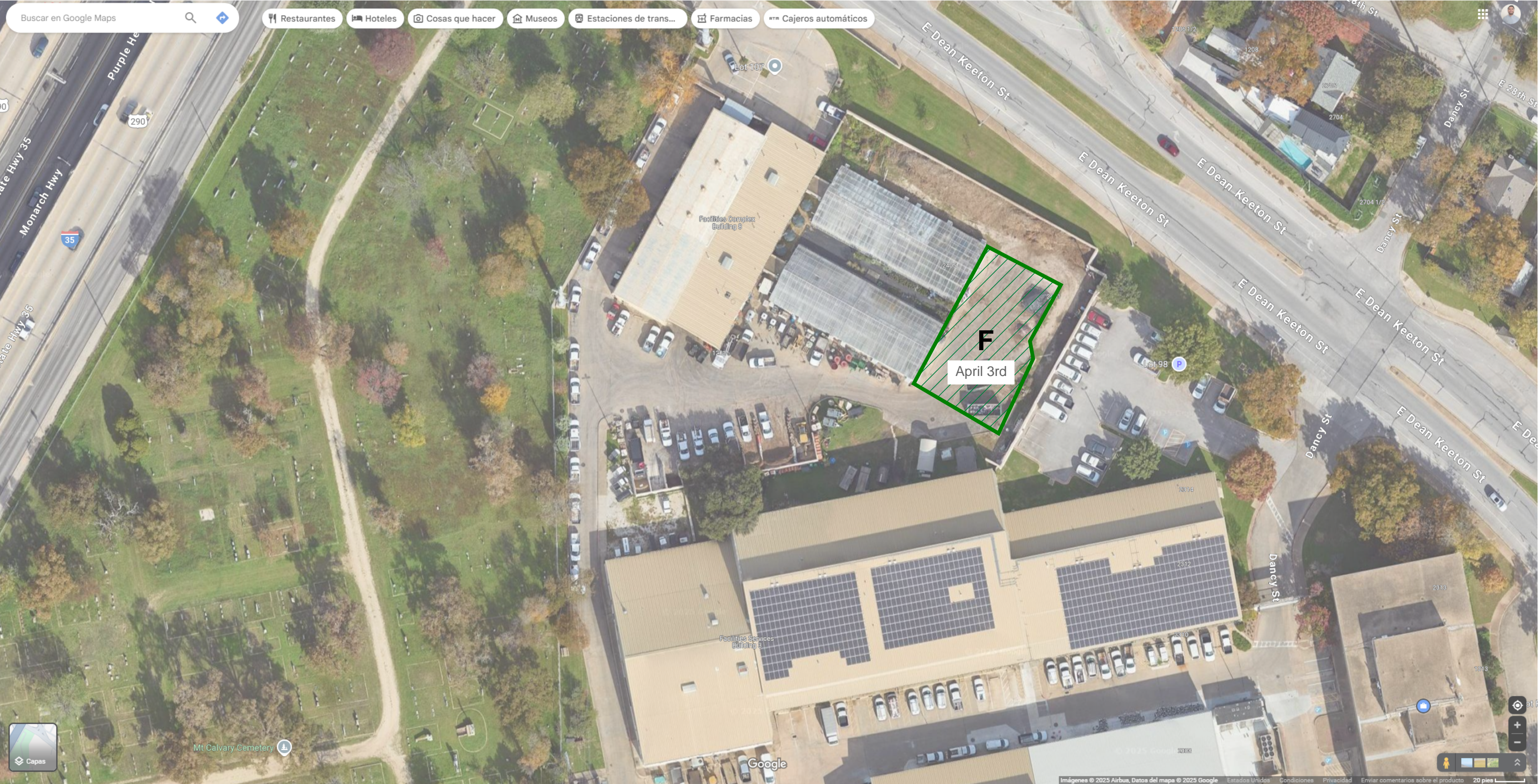
E April 2nd

Phase 1

Phase 4

- NO VEHICLES IN THIS AREA
- TEMPORARY VEHICLES LOCATION

C) Striping



Phase 1

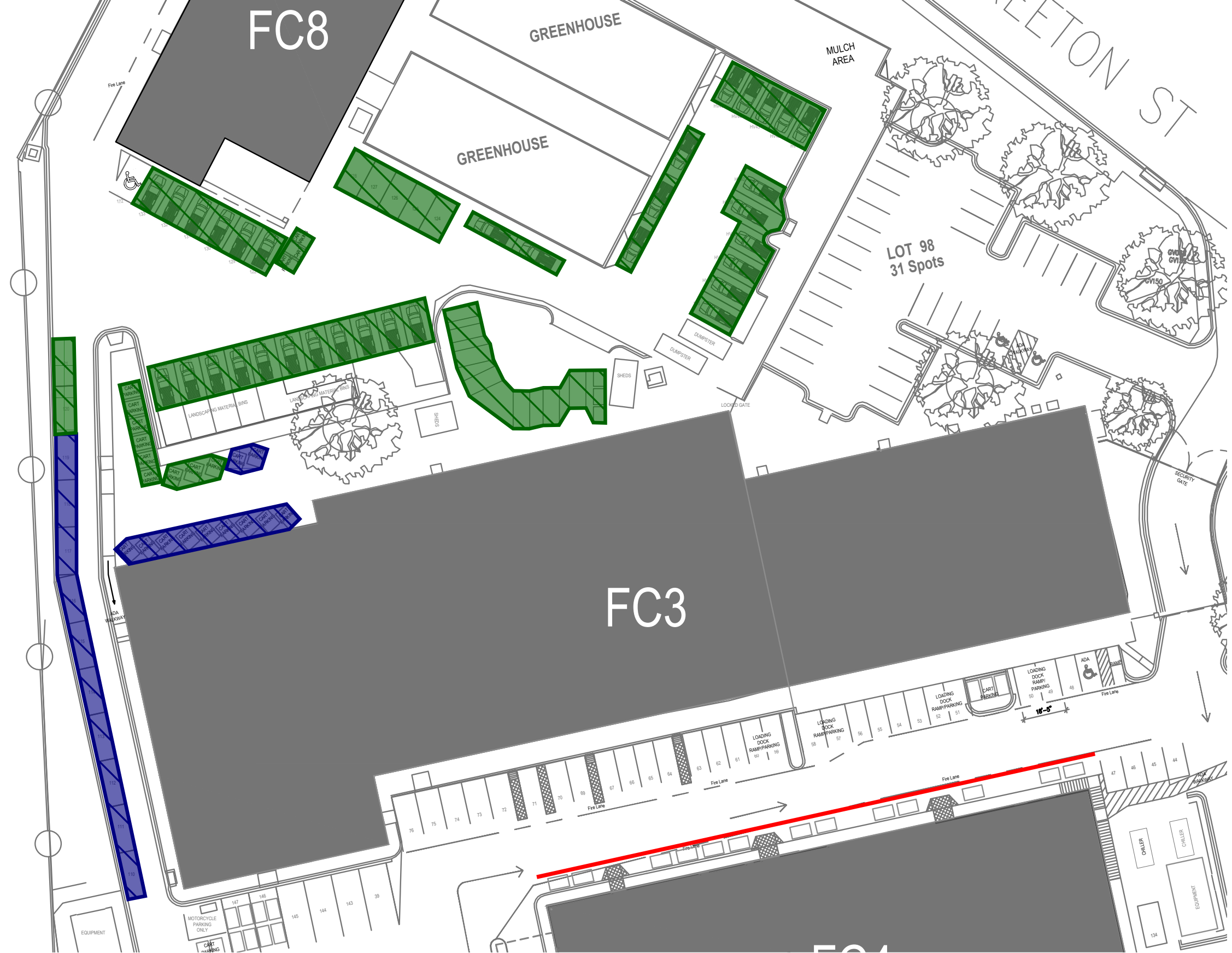
Phase 5



 NO VEHICLES IN THIS AREA

 TEMPORARY VEHICLES LOCATION

C) Striping

Phase 1 Completion



-  **CAMPUS GROUNDS AND LANDSCAPE**
-  **FACILITIES OPERATIONS AND MAINTENANCE**